

ST. FRANCIS OF ASSISI CATHOLIC CHURCH

FRISCO, TEXAS

Eternally We Build...

CHRISTMAS 2007

LITURGICAL SCHEDULE

Celebration of Mass

Saturday 5:00 pm, Vigil Mass

Sunday 8:30 am, 10:00 am, 11:30 am,
1:00 pm (Spanish Mass)
6:00 pm (Youth Led Mass)

Weekday Masses

8:30 am - Rosary & Divine Mercy Chaplet Follow

SACRAMENTS

Reconciliation (Confession)

Thursdays from 6:00-7:00 p.m.,
Saturdays from 3:30-4:30 p.m. or by
appointment.

Baptism

Parents must attend a Baptism class prior to scheduling the baptism. Classes are held the second Saturday of each month at 9:30 am in rooms A, B, C, & D.

Matrimony

Marriages require a six month preparation period. Please call the office to inquire about marriage preparation.

Anointing of the Sick

Call the church, any time, day or night. After business hours, call the emergency phone at (972) 974-5430 for critical situations.

Become a Catholic

Rite of Christian Initiation of Adults—for those interested in learning more about the Catholic religion. For more information, call the parish office, or David Utsler at ext. 247.



PARISH STAFF

Rev. Timothy Heines, Pastor
Rev. Antonio Ortiz, Parochial Vicar, Ext. 314
Frank Reyna, Deacon, Ext. 230
Carl Macero, Deacon, Ext. 310
Daniel Covarrubias, Deacon, Ext. 356
Gregory Kahrs, Deacon, Ext. 357
David Utsler, Pastoral Associate, Ext. 247
Tracy Brown, Business Manager, Ext. 226
Mark Smith, Director of Development, Ext. 351
Nathan Byers, Associate Development Dir., Ext. 352
Anneliese Rivera, Liturgy Director, Ext. 237
Kevin Shelley, Music Director, Ext. 313
David Rodriguez, Director of Hispanic Ministry, Ext. 241
Vicky Cardoney, Hispanic Ministry Asst., Ext. 227
Diana Elwell, Children's Ministry, Ext. 229
Francine Holowak, Children's Ministry Admin., Ext. 316
Steve Nasche, Youth Ministry Director, Ext. 232
Tammy Weber, Youth Ministry Coordinator, Ext. 358
Jeannette Manning, CM and YM Administrator, Ext. 234
Lauren Harbour, KDO Director, Ext. 235
Noel Johnston, Facilities Manager, Ext. 231
Ginny Milich, Safe Environment Coordinator, Ext. 228
Kyle Cupp, Executive Administrator, Ext. 225
Buddy Rives, Hispanic Ministry/Reception, Ext. 360
Alma Geller, Reception, Ext. 221

8000 Eldorado Parkway • Frisco, Texas 75034 • Office (972) 712-2645 Fax (972) 712-1087
General E-Mail: office@stfoafrisco.org • Website: www.stfoafrisco.org

OFFICE HOURS: The parish office is open Monday through Thursday from 9:00 am until 5:00 pm and on Friday from 9:00 am to 12:00 noon. We are closed for lunch between 12:00 pm and 1:00 pm.

NOTE FROM THE PASTOR

Dear Friends,

A special welcome to all of our young people home from college and for extended family and friends from throughout the world! As you may have noticed, there has been some work going on here at St. Francis in anticipation of the construction of our new church home! We wanted to take this opportunity to introduce our plans for a church to our newcomers and visitors, and give an update on our progress on the project to the rest of our parish family. I hope you will enjoy this informative little Christmas booklet and that your time with friends and family will be especially warm and blessed!

*In His Sacred Heart,
Fr. Timothy
Rev. Timothy J. Heines*



OUR VISION

As we continue to grow as a community, the charism of discernment, of wonder, of joy in the presence of Grace is one we seek to share and develop. We continue to expand our support of the poor and the needy. We continue to teach our children about the power of a God who is intimately involved in our world, our lives, our very hearts. This perspective of Incarnation, this celebration of wonder, will take form in bricks and mortar as we build the home for our church family. This will be a sacred space in which the hidden beauty of God's life is made manifest not only through art and architecture, but from the holy worship rendered by a community whose love and service of God and neighbor will be a sign to a world marred by violence and doubt. This church is a sacramental, a sign of power and grace. Be a part of making this building sing to the glory of God!

SACRED ART

Sacred Art is not meant to be decorative, but inspirational. It is to be a manifestation of God's grace working through artists to inspire, edify, educate, and convert those who experience it. Every element of our new church building expresses or points to some key dimension of Divine Revelation. One example of this is art in the form of sculptures by Lynn Kircher. Lynn is currently in the process of creating bronze sculptures of Our Lady and the child Jesus opposite Saint Elizabeth and John the Baptist in the Narthex. Children of the parish can interact with the life-like images of Jesus, his mother, aunt, and cousin.



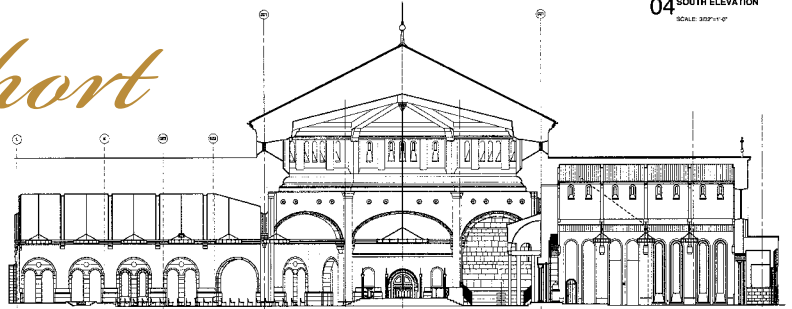
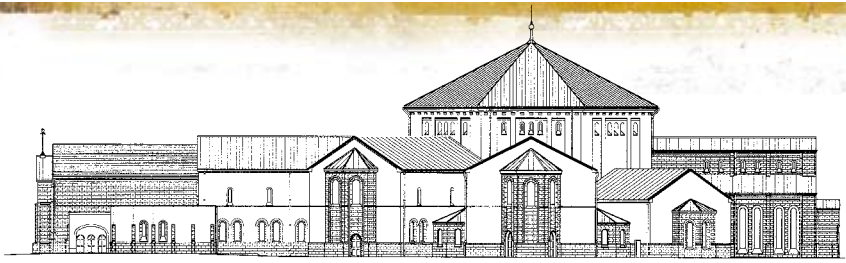
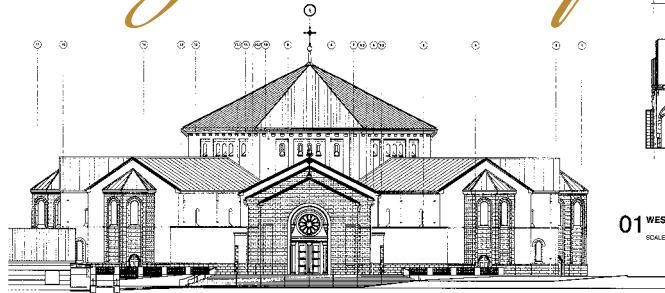
In April of 2002, Lynn fulfilled a life long dream when he and his mom, his first patron, presented a sculpture to John Paul II for the Vatican Collection.

NAMING OPPORTUNITIES

As is the practice when building a church, there will be opportunities to sponsor art, stained glass and other liturgical elements within the new church as memorials or honorariums for loved ones. We will announce the availability as we near construction start, now targeted for late summer 2008.



BUILDING PROJECT
Progress Report



For the past year your Building Committee and Father Timothy have been diligently working with our architect, John Clements, to refine the design of our new church that meets a \$15 million building construction budget. Maintaining design integrity for a sacred space with the required 1500-seats guided the comprehensive refinement process. As a result, the refined design has enabled us to provide a very beautiful and efficient building incorporating traditional liturgical elements that meet with the approval of the Diocesan Liturgy Commission. We also coordinate and seek approval from the Diocesan Building Commission on our plans. On December 12, the Building Commission reviewed and approved our mid-stage design drawings and authorized the parish to begin drawing the comprehensive Construction Documents. As we progress through the project, our building

... the refined design has enabled us to provide a very beautiful and efficient building incorporating traditional liturgical elements that meet with the approval of the Diocesan Liturgy Commission...

team will continue coordinating planning progress with the Diocesan Commissions. Accordingly, we believe we have kept to the example our patron, St. Francis, when he heard the San Damiano Cross, "Rebuild My Church." Thus, the edifice of the new St. Francis of Assisi Catholic Church is a bricks and mortar sacrament of the spirituality of our patron.

Some of the cost saving refinements included removing the basement and relocating the HVAC systems. The church's

height was also reduced by approximately six feet as another effective means to reduce costs and we additionally relocated the St. Clare and St. Bonaventure chapels into the redesigned areas of the reconciliation rooms and corridors. This action has enabled more efficient use of that space and saved additional costs via the reduced square footage. The spiritual intent and functionality of both chapels remain unchanged.

Simultaneous to the design refinement and cost reduction efforts, earnest engineering studies and design planning have been underway for the campus infrastructure projects needed to support the new church. For example, the West Parking Lot expansion began in mid-October to add over 400 new parking spaces and should take Mario Sinicola & Sons, Inc. approximately 120 days to complete, pending weather cooperation. Later, our campus design calls for more parking spaces to be added around the new church. The parish will also, as required by the City of

continued on back page



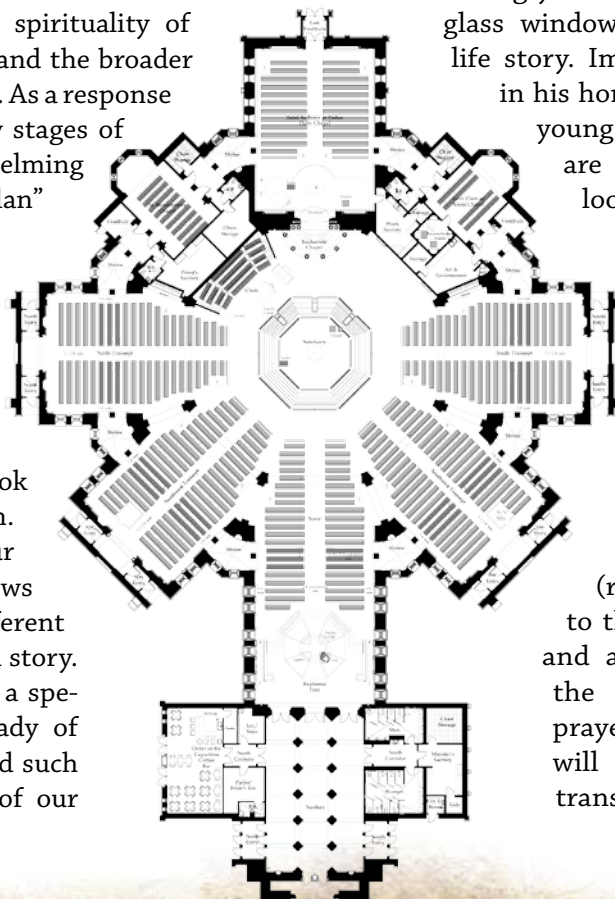
A Sacred Space

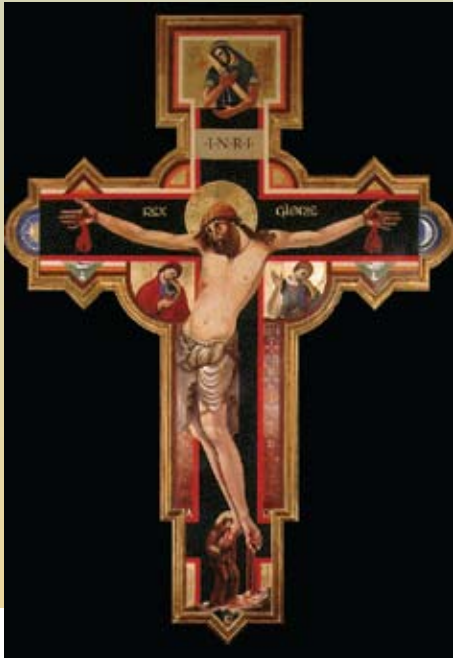
THE DESIGN OF THE CHURCH

...the experience of worship and prayer in our new church building will be spiritually uplifting and transforming.

As you familiarize yourself with the design of the church, you will learn that every decision, every “nook and cranny” of the structure has been chosen and designed with reference to the spirituality of our patron, St. Francis of Assisi and the broader Catholic tradition which we share. As a response to your input in the preliminary stages of design, particularly the overwhelming desire for a “traditional church plan” we have made choices that will lend themselves to the development of a place that not only provides an excellent environment for Sunday worship, but also for private devotion and prayer. This is particularly in evidence as we look at the transepts of the church. Our north transept reflects our devotion to Our Lady. Its windows and shrines each reveal a different dimension of her role in our faith story. The highlight of the area will be a special shrine dedicated to Our Lady of Guadalupe who has always played such an important role in the lives of our

parishioners of Hispanic descent. The south transept does the same for our patron, St. Francis. Imagine walking your children by the beautiful stained glass windows which tell of his fascinating life story. Imagine too stopping at a shrine in his honor to pray for peace and for our young men and women abroad who are defending our country. As we look to the other transepts of the church, we are reminded that Catholic faith and love are intimately connected in service to others. The windows and shrines in these transepts revolve around the Corporal and Spiritual Works of Mercy. This structure will edify and educate as we are reminded of great examples from our past (recent and distant) of service to the sick, the grieving, the dying, and all those who suffer. In short, the experience of worship and prayer in our new church building will be spiritually uplifting and transforming.





SAN DAMIANO CROSS OF ASSISI

One of the most distinctive features about our current temporary worship space is the prominent crucifix behind the altar, an exact replica of the San Damiano cross of Assisi. As a young man in the midst of an experience of conversion, the young Francis knelt in front of this cross in a dilapidated church on the outskirts of town. In that moment of discernment and deep prayer, a voice came to him and said, “Rebuild my Church.” Ever the literalist, Francis immediately began his rebuilding of that little chapel. That rebuilding prefigured a much more profound spiritual renewal that would be the product of his hands, the renewal of the entire Church throughout Europe.

Obviously then any serious attempt to capture the spirituality of St. Francis must in some way incorporate this abiding symbol. In many ways, our plans for the crucifix in our new Church of St. Francis illustrate our guiding philosophy for our entire project. We do not intend to merely replicate that symbol, but instead, we intend to re-envision it. As part of a living tradition, our task is not merely to ape spiritual forms of the past but to instead embrace them and allow them to transform us. In so doing, they evolve into new forms which in turn challenge our modern world. Francis’ message was and is radical but it remains our task to translate his wisdom into a language which speaks as forcefully to a twenty-first century audience as it did to a thirteenth century one.

To achieve our symbolic end, we spoke with an artist from Dallas, Nancy Rebal. Pictured left is an example of her work of a crucifix in St. Joseph Church in Richardson, Ms. Rebal is currently researching the original San Damiano crucifix to fully understand its theology and spirituality. From that process of discernment, we will speak to her about what message the cross must convey in our own complex world. From that discussion, we will find a way to create a crucifix which from a distance will be a worthy homage to the cross that inspired Francis. The work of art will be our own; our own attempt to take Franciscan spirituality and symbolism.

In a way, this speaks to the principles that have guided much of our deliberations for three years of design on this new building. We are faithful to the wisdom of the past, inspired and fed by it, and desirous of bringing it into the future. Yet we also know that we are not building a museum, but a living place of worship for a lively people. To that end we must ensure we build a church of the present. The design you see in this Christmas booklet has elements that are at once old and new, a way of having communal worship while retaining devotional forms that are so dear to our parishioners. Our San Damiano cross is a great example of our way of bringing Francis to a new generation.

A Sacred Space...

Elements of the Church

- To support expected growth, seating with kneelers for 1500
- An inviting “pilgrimage” ambulatory to pray the Stations of the Cross
- Private Reconciliation Chapels
- Coffee bar for socializing after Mass
- Choir space and practice area
- Bride and Groom rooms
- Additional parking adding 400 new spaces

Stained Glass Windows

- Life of St. Francis
- Our Lady
- Corporal Works of Mercy
- Spiritual Works of Mercy

Shrines

- Our Lady of Guadalupe
- Our Lady of Lourdes (For the Sick)
- Our Lady of Sorrow (For the Dead)
- St. Francis Stigmata
- St. Francis and the Birds (For the World and Ecology)
- St. Francis and the Wolf (For Peace and Our Troops)
- Sacred Heart
- Divine Mercy
- St. Jude
- Padre Serra (Vocations)

Capital Campaign Update

In October 2006, we began our \$15 million Capital Campaign to raise the funds necessary to build our new sanctuary. To date, we have been blessed to have received one-time cash contributions and pledges totaling \$14.5 million. This is a magnificent achievement for our community to be so very close to reaching our campaign goal. With new families registering in the parish each week, we ask those new to our community to prayerfully consider making a pledge to help build the new church. We deeply appreciate all the gifts received that truly reflect the generous hearts and stewardship of all our donors helping to build the new church. As Father Timothy has said, "...we all have the opportunity to become part of this project, something much bigger than ourselves and something that will be given back to the community, to your children and grandchildren for years to come."

We deeply appreciate all the gifts received that truly reflect the generous hearts and stewardship of all our donors helping to build the new church.

While we have been very successful in supporting the Building Fund through the campaign, the need for our community to support the Building Fund during and after the church construction will remain over many years. As indicated in the Progress Report, we will be finalizing the loan to cover the costs over and above the cost of the new church building. Top level plans call for a long-term amortization with an early payoff—more on that later.



As requested by many donors, we send monthly "payment reminders" which are solely intended to provide a convenient snapshot of pledge information. Please take a look at your reminder to verify your account information and don't hesitate to call us if you see an

error. Campaign gift envelopes are in the envelope package mailed each month to registered parishioners and are also available in the Narthex at the Building Committee table—gift envelopes can be placed in the collection baskets at Mass.

Please call the Development Office at 972-712-2645, ext 351, if you have questions about the campaign, the new church or the donation processes for stock, real estate, estate bequests, annuities, or charitable remainder trusts. Pledge contributions can also be made via draft or credit card.



Please call the Development Office at (972) 712-2645, ext 351, if you have questions about the campaign, the new church or the processes for stock, bank draft or credit card donations. The Campaign Committee thanks you for supporting our new church.

ANNOUNCEMENTS

January 1, 2008 is the Solemn Feast of Mary, Mother of God.

Mass times are as follows:

- 8:30 a.m. English
- 10:00 a.m. Spanish
- 5:00 p.m. Spanish
- 7:00 p.m. English

Remember in Prayer

Please pray for the sick and suffering of our parish: Tracy Case, Sonja Tranter, and Matt Rooney.

Please pray for the recently deceased: Helen Schliem, Herminia Coria, Eleanor Saniga, Molly Hlvenka, Edelia Angles, Padre Aurelio Ruiz, Martinez Alvaro, and Eofilo Mesta.

Please call the office to add or remove someone from this list. Names will be listed for four weeks and then will be transferred to our Book of Intentions.

SAVE THE DATE

As part of our parish Year of the Eucharist, St. Francis of Assisi will be celebrating a very special

Children's Eucharistic Adoration on Wednesday, January 16, at 6:30 p.m. Children's Ministry classes will be canceled the week of January 13, and all families are asked to attend this special parish event in lieu of class that week. For a preview of Children's Eucharistic Adoration, visit: <http://childrenofhope.org/popupex.html>.

LET THE GOOD TIMES ROLL ... for an evening you won't want to miss at the **3rd Annual Mardi Gras Frisco™ 2008**, Friday, February 1, 2008 from 7:00 pm to 12:30 am, at St. Francis. Great Food, Live Music-Hunter Hayes, Dancing, Live Auction Items, and The Reverse Raffle with your chance to win! For more details visit: www.mardigrasfrisco.org.

Hospital Ministry. In the event that you know that you will be staying in the hospital (e.g. pre-planned procedure, etc.) and would like to receive Holy Communion and have prayer while you are there, please let us know. St. Francis' Hospital Ministers are ready and waiting to serve you. Call the parish office with the dates you will be in the hospital and we will make sure to be there for you. And if you didn't plan on being in the hospital, but find yourself there, don't hesitate to call the parish office if you want someone to visit you and bring you Holy Communion.

If you would like to become a St. Francis Hospital Minister, contact Jim Smiley at 972-978-9133.

Divorce Support Group: Are you divorced with children, or do you have a personal experience with divorce and would like to help others? Just Me & the Kids is a divorce support group for single parents and their children (grades Pre-K-6). This program is designed to guide single parents and their children through the pain of divorce, toward hope and healing. Our Spring session runs every Monday evening from January 14th - March 31st. Pre-registration is required and babysitting is available. We also need adult and teen facilitators. To register or volunteer for the Spring sessions, please contact Anna Tillerson at 972-741-1635 or tillyfamily@msn.com.

Nursing Home/Homebound: Our ministry to area nursing homes and to home bound parishioners is growing and we need your help! You can minister in either area or just one, whatever you feel God is calling you to do. Ministers bring Holy Communion to those who cannot attend Mass and often much needed fellowship and prayer. If you would like to be a part of this deeply rewarding ministry, please contact Evelyn Grimes at Egrimes@OldcastleGlass.com or at 972-335-1850.

COMMUNITY LIFE COMMISSION

Commissioner – H. Mauricio Frye (214)-335-9519
Art Classes – Rosie Camp (972) 335-6390
Boy Scouts – Bill Strait (469) 633-0420
Catholic Singles Volunteering - Elaine Smith (972) 292-2692
Cub Scouts – Gary Bedard (972) 712-9507
Empty Nesters I - Bob & Marilyn Groshek (972) 335 -1655
E. Nesters II - Katherine & Marcelo Salazar (972) 335-2734
Empty Nesters III - Tom & Sandra Clarke, (214) 705-0028
Girl Scouts - Misty Dröessler (972)-302-1362
Grounds Crew – Kevin Guz (469) 633-0232
Hospitality – Jackie & Tim Wood - Tutjackie@yahoo.comT
Knights of Columbus – George Gano (214) 783-2132
Ladies Auxiliary – Elizabeth McCarthy 972-668-9110
Marriage Ministry – Chris & Deborah Sulak (972) 335-8992
Ministry of Mothers Sharing – Clara Carlisle - claralarry@yahoo.com
Morning Rosary/Prayer Group - Sandy Shea - shea62SS@aol.com
Group of Multicultural Dance - Patricia Cacaes (469) 358-7948
Nursery during Mass – Marie and Paul Ressa (972) 335-7924
PrimeTimers – Marilee Nordhaus (972) 712-4673
Softball Teams Men's & Co-Ed – Raul Perez (972) 542-9916
Women of St. Francis – Christina Linden (972) 668-2589
Young Adults – Travis and Melissa Hunt (972) 335-0502

FAITH FORMATION COMMISSION

Commissioner – Barbara Intondi (469) 384-5367
Bible Study – Ron Holleman (972) 978-7551
Children's Faith Formation – Diana Elwell (972) 712-2645 (ext. 229)
Pre School Faith Formation – Janet Kurth (972) 712-4230
MS/HS Youth Ministry – Steve Nasche (972) 712-2645
Kids Day Out – Lauren Harbour (972) 712-1657

OUTREACH COMMISSION

Commissioner – GERALYN Kaminsky (972) 335-4186
AIDS Supper Club – Jennifer Greenlee (469) 682-1614
Angel Tree – Elaine Smith (972) 292-2692 and Janice Hoang (2)-387-9845
Blood Drives – June Taylor phone (214) 808-3014
Brown Bag Sunday – Tim Filesi (214) 387-0667
Catholic Addiction Ministry – Vincent Webb (972) 804-2812
Clothe a Child – John and Betty Hamilton (972) 712-4747
Family Divorce Support – Anna Tillerson (972) 741-1635
Funeral Meals – Janice Hoang (214) 387-9845
Grief Ministry – Valerie Broadbent (972) 987-8812
Hospital Ministry – Jim Smiley (972) 978-9133
Handyman Program – Leader Needed
Illness/New Baby Meals – Melanie Duhaime (214) 387- 8044
Nursing Home/Homebound Ministry – Evelyn Grimes (972) 335-1850
Parents Raising Children Alone – Hilda Liando (972) 900-1055

Prayer Chain – Anneliese Rivera (972) 712-2645 (ext. 237)
Respect Life – Rachel Lam (214) 478-5710
Thanksgiving Baskets – Susan Johnson (469) 384-8900

LITURGY COMMISSION

Commissioner – Melissa Silvestro (972) 335-6966 msilves@grandecom.net
Altar Guild – Mary Bickel (972) 540-1040
Altar Servers – Anthony Cimo (972) 712-7750 anthonymimo@tx.rr.com
Art & Environment – Shelley Dunton - Tshelley_dunton@tx.rr.comT
Children's Liturgy – 972-335-4416 / jdevine33@tx.rr.com
EM Coordinator – Irene Balderas (972) 335-4539 balderasd@aol.com
Lectors – Melissa Silvestro (972) 335-6966 msilves@grandecom.net
Liturgy – Anneliese Rivera (972) 712-2645 (ext. 237) arivera@stfoafrisco.org
Music Ministry – Kevin Shelley (972) 712-2645
Sacristan – Shirley Forster – (972) 335-4297
Ushers – Tony Silvestro (972) 335-6966 tsilves@grandecom.net

HISPANIC COMMISSION / COMISIÓN HISPANA

Comisionado, Adriana Merigliano (214) 395-2502
Lectores, Eduardo Ortiz (972) 347-2968
Ministros Extraord. Comunión, Roberto Alexander (972) 712-6914
Coro Hispano, Silvestre González (469) 682-2827
Sacristanes, Bertha Gallegos (972) 347-2578
Ujieres, Salvador Casillas (972) 382-3425
Quinceañeras, Gladys Garcia (972) 712-2926
Visitar los Enfermos, Luis Garzón (214) 387-9238
Guardería, Beatriz Roca (972) 712-9454
Ambiente Seguro, Buddy Rives (972) 712-2645 x360
Formación de Fe, Cecilia Méndez (469) 633-6880
Grupo de Jóvenes, Pedro Garcia (214) 536-4039
Guadalupanos, Rocendo Montes (214) 554-2422
Grupo de Oración, Francisco Gómez (972) 347-5147
Encuentro Matrimonial, Sr. y Sra. González (972) 334-0814
Movimiento Familiar Cristiano, Sr. y Sra. Lara (469) 667-8709
Justicia Social, Anita Campos (972) 347-5654
Clases de Inglés, Buddy Rives (972) 712-2645 x360
Grupo de Música y Danza, Patricia Caceres (469) 358-7948
Comida Mexicana Anual, Bárbara Gallegos (972) 668-2102
Salsa Social, Mayra Diaz (972) 335-9706

ALL CALLED TO SHARE (ACTS) COMMITTEE

Committee Chair – Kay Heller (972) 294-1872 - stfacts@gmail.com
Welcoming Committee – Sandy Cimo (972) 712-7750

PARISH DEVELOPMENT

Building Committee – Steve Hulsey (972) 335-1616
Finance Council – Jim Barton (972) 712 8320
Parish Council – Charlie Donner (972) 624-5871

continued from page 3

Frisco, pay one half the costs to improve the roads adjacent to our property: Eldorado Parkway, Rogers Road, and CR 710. Lastly, we must build a retaining wall adjacent to the intersection of Rogers and Eldorado Parkway. Planning and cost determination for the remaining site projects is in progress. As indicated in Father Timothy's early presentations on our new church, the comprehensive financial plan requires supplementing the \$15 million cost of the sanctuary with a yet-to-be-determined loan covering the additional cost elements, such as the roads and parking lots. Once the overall project totals are finalized by the Building Committee and coordinated with the Parish and Finance Councils, we will seek approval from the Diocese to obtain the loan and will, accordingly, publish the total project costs.

As with most church construction projects, it takes many years to fully complete a church. Accordingly, the initial phase of our project is centered on constructing the church building, along with roads and parking lots. While there will be some stained glass and art visible when the first Mass is celebrated, the full array of planned stained glass and art will be phased in throughout the years. Stained glass and art design has also been, and continues to be, a work in progress.

Without question, future construction activities will impact ease of access and departure from current multi-purpose building. We will notify the community of anticipated impacts as early as possible—we ask for everyone's patience during critical construction windows.

Mark Smith, Director of Development

FR. TIMOTHY'S PRESENTATION ON THE NEW CHURCH

Since our community was formally designated a parish in 1997, our parish Building Committee has been mapping the game plan for building a new church to support our rapidly growing family. In the past two years, the design plans have been refined and we have nearly completed our \$15 million Capital Campaign. To learn more about the progress of this once-in-a-lifetime undertaking, **YOU ARE INVITED TO HEAR FATHER TIMOTHY SPEAK ABOUT THE CURRENT PLANS FOR CONSTRUCTING OUR NEW SANCTUARY** from **7 to 8:30 PM, 31 January 2008 in the San Damiano Room.** Whether or not you have heard Father speak previously about the new church, this is an excellent opportunity to hear the latest news about our construction project. Father will discuss the theological basis of the church design, elements of the interior, provide status and plans, and take your questions. The presentation is for adults and, as such, we will have childcare available at the church upon request. Please RSVP, along with childcare needs, to Buddy Rives or Alma Geller in the church office at 972-712-2645. We look forward to seeing you at this very enjoyable evening.



ST. FRANCIS OF ASSISI CATHOLIC CHURCH Building Development Leadership Team

HONORARY CAPITAL CAMPAIGN CO-CHAIRS

Jan and Thom Schliem

Joyce and Denny Houlihan

Steve Hulsey: Building Committee Chairman
Jim Barton: Finance Committee Chairman

Charlie Donner: Capital Campaign Co-Chair
and President, Parish Council
Judy Zafereo: Capital Campaign Co-Chair

Lyle Clark
Fred Burkhalter
Joyce Houlihan
Mark Smith
Joe Gonzales
Scott Enderle
Mauricio Frye
Ann Kaser
Kevin Bird, Program Mgr
Roger Hood

Jaime Ramirez
John O'Malley
Noel Johnston
John Clements, Jackson & Ryan Architects
Mark Nieberding
Anneliese Rivera
Nathan Byers

